



SINCE 1968 | PRECISION IN SERIES

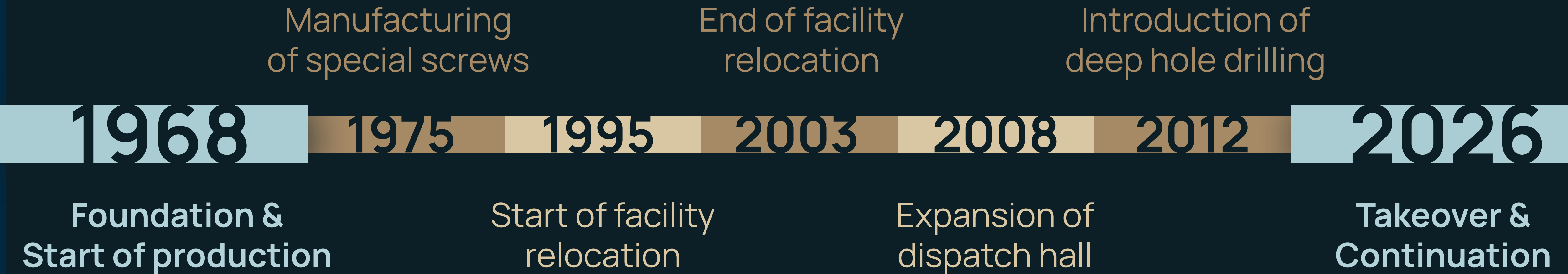
Special connections require trust.



MILESTONES



New leadership, proven precision.



What began in 1968 and found its focus in 1975 with the **specialization in custom screws** is today a high-tech manufacturing facility. Following continuous technological expansion – such as **deep hole drilling** in 2012 – **Ziad Faidi** will lead the company into the future with **fresh momentum** starting in 2026.



Connections that last.



Wind & Energy

High-strength connections for tower and blade segments with maximum corrosion protection.



Infrastructure & Bridges

Large-scale threads (up to M180) and reliable certification according to AD 2000.



Aerospace Industry

Precision turned parts made of special alloys (titanium, Inconel) with seamless traceability.



Mechanical Engineering

Wear-resistant components through chipless cold forming (thread rolling up to 120t).



Oil, Gas & Chemicals

Certified safety parts for pressure equipment (PED 2014/68/EU) and deep hole drilling for hydraulics.

Technical Basis: 14 CNC turning machines | Thread rolling up to 120 tons pressing force | Deep hole drilling | Ultrasonic & crack detection



Turning. Milling. Rolling. Testing.



CNC Turning & Automation

Okuma Space Turn:
For complex components, highest Japanese precision.

EMAG VL 4: Vertical turning machine with pick-up automation for efficient series production and automated loading/unloading.



Heavy Machining & Long Parts

Boehringer flatbed machines:
Extremely stable cast steel frame for vibration-free machining of long workpieces.

NG 200: Equipped with twin tool turrets for parallel turning and drilling – massively reduces downtime.



Milling & Deep Hole Drilling

Hedelius BC 80:
4-axis machining center for various component sizes.

Deep hole drilling:
Specialized process for extremely deep holes with tight tolerances.



Thread Rolling

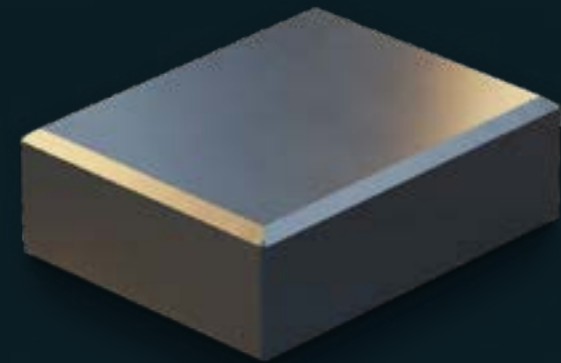
Pressing force: 18 to 120 tons.
Dimensions: M16 to M180.
Profile: Metric, Imperial, UNC/UNF, Whitworth, Round threads

For guaranteed crack-free quality:
Non-destructive testing on our own Tiede magnetic particle and ultrasonic systems.

MATERIAL EXPERTISE & AVAILABILITY

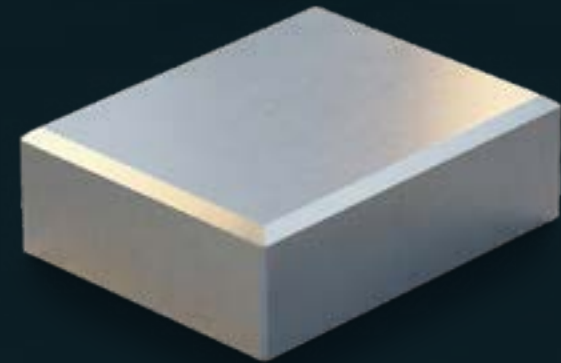
2,000 tons. Immediately available.

2,000 t storage capacity | 639 storage cassettes for high variety | 24/7 automated access



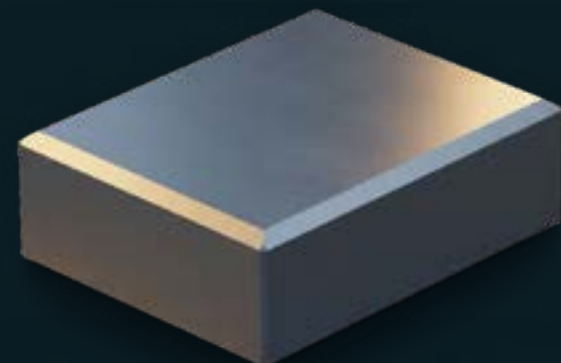
Standard & Tempered Steels

For general mechanical engineering and high strength. C35/
C45, 42CrMo4, 34CrNiMo6.



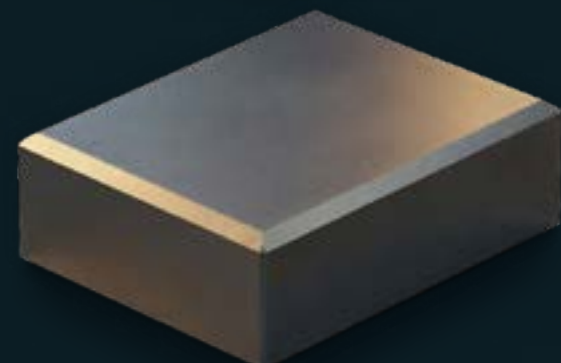
Stainless, Acid-Resistant & Duplex Steels

For offshore, chemicals, and corrosive environments.
1.4462 (Duplex), X6NiCrTiMoVB25.



Special Materials & Nickel Alloys

For aerospace and extreme requirements.
Inconel, Titanium, NiCr20TiAl.



Creep & Heat-Resistant Steels

For power plants, turbines, and extreme temperatures.
21CrMoV5-7, X22CrMoV12-1.



CERTIFIED QUALITY



Proven safety for the most demanding industries.

DIN EN ISO 9001:2015

The foundation of our work. Certified quality management system ensuring end-to-end process reliability in the production of special screws and precision parts.

AD 2000-Merkblatt W0

Approval for highest pressures. Official recognition by TÜV NORD Systems as a qualified material manufacturer for equipment subject to inspection.

Pressure Equipment 2014/68/EU

Safety according to EU standards. Approved system for manufacturing fasteners from austenitic and ferritic materials for pressure equipment.



VISION 2026+



Human and automation in perfect synergy.



We are consistently advancing our manufacturing towards a digitalized and semi-automated future. Our goal is not to replace people, but to deploy their strengths optimally.

In the future, intelligent machines and automated processes will take over heavy and repetitive tasks.

This creates the freedom for what has made the difference at Köhne since 1968: the expertise, quality awareness, and problem-solving skills of our employees.

CONTACT & INSIGHTS

Get to know us:



Ziad Faidi
Managing Director

Phone: +49 (0) 29 52 568

Email: Ziad.Faidi@koehne.tech

Web: www.koehne.tech

Köhne Spezialschrauben GmbH & Co. KG
Ziegeleistraße 7 | 59602 Rülthen | Germany
